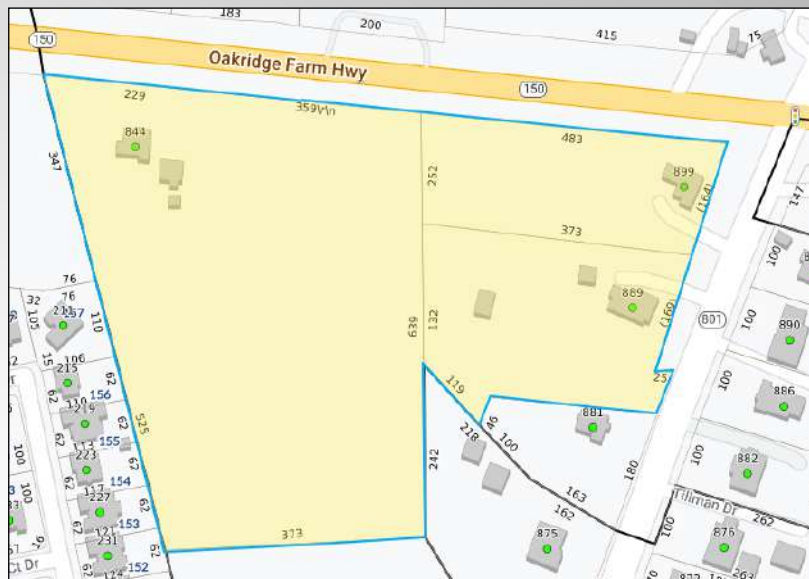


# Hwy 150 & 801—Mooreville—NC

## Commercial Retail/Mixed Use Property



**For Sale \$3,500,000**  
**+/- 11.8 Total Acreage**

This property includes 3 parcels, each with an existing home. The property has over 1,000' of road frontage on HWY 150 and has commercial zoning. This is a prime location for a commercial retail/mixed use, grocer, shopping center development, and is positioned near new major residential projects that are in development.

**John Kindley**

Broker

704.677.3048 Cell

JKindley@EquityCP.com

**Carl "Andy" Peggs**

Broker

704-400-9598 Cell

APeggs@EquityCP.com



# Hwy 150 & 801 Intersection

Mooresville, NC 28115

EquityCP.com

Property Outline For Visual Reference Only



## Property Details

Price:	\$3,500,000
Land:	+/- 11.8 Acres
Proposed Use:	Retail/Grocer
Proposed Zoning:	Commercial
Traffic Count Hwy 150:	15,000 VPD
Frontage Hwy 150:	+/-1,050 ft
Frontage Hwy 801:	+/-350 ft
Utilities Availability:	Mooresville
Population 5 mi radius:	87,600

