

HONEYCUTT FLATS

LUXURY BARNDOMINIUM LIVING

Troutman - Mooresville - NC



Honeycutt Flats

Introducing a Unique Living Experience in the Troutman & Mooresville area. Honeycutt Flats has 15 Lots now available for purchase! This Luxury Residential Garage Community brings an exciting concept to the Perth Road Lake Norman area. Custom built homes by Spivey Construction Co. Inc, combines the flexibility of Luxury Living and Large Premium Garage areas to accommodate motorhomes, boats, cars, ATV's & hobby shops.

Willis I. Spivey
Spivey Construction Co., Inc.
48 Years 1975 - 2023
704-363-7288
Willis@SpiveyInc.com

Lewis D. Spivey
Equity Commercial Properties
Realtor/Broker
704-363-1401
Lspivey@Equitycp.com



HONEYCUTT FLATS

LUXURY BARNDOMINIUM LIVING

Lake Norman State Park - 2 Miles



Town of Troutman - 4 Miles



Honeycutt Flats



I-77 Exit 42 - 6 Miles



The Village at Byers Creek - 8 Miles



HONEYCUTT FLATS

LUXURY BARNDOMINIUM LIVING

Exterior Photos



HONEYCUTT FLATS

LUXURY BARNDOMINIUM LIVING

Interior Photos



HONEYCUTT FLATS

LUXURY BARNDOMINIUM LIVING

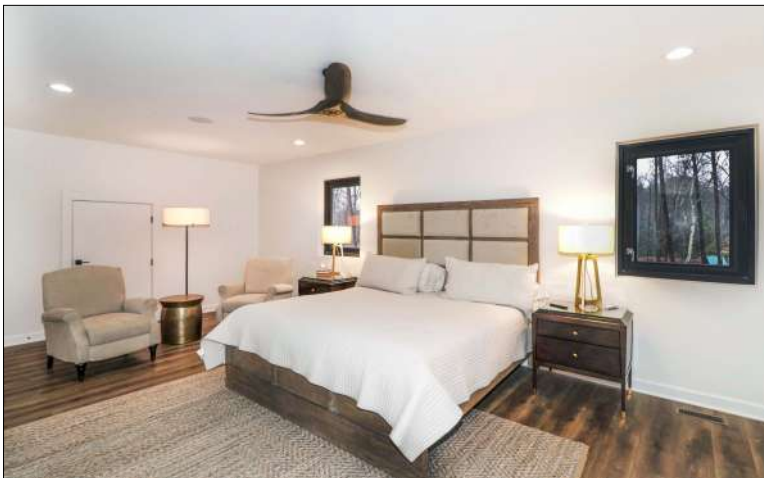
Interior Photos



HONEYCUTT FLATS

LUXURY BARNDOMINIUM LIVING

Interior Photos

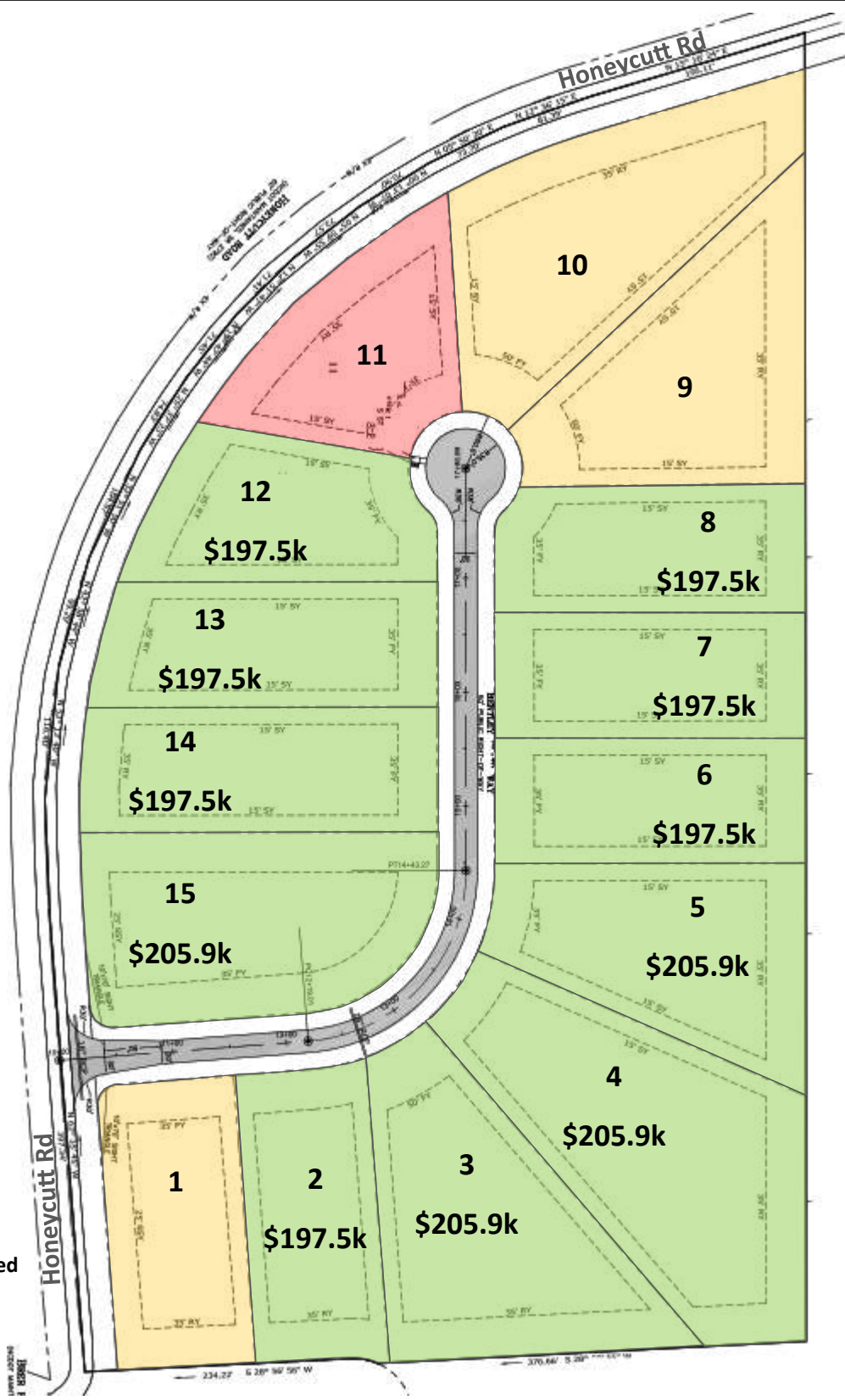


HONEYCUTT FLATS

LUXURY BARNDOMINIUM LIVING

Site Plan & Lot Information

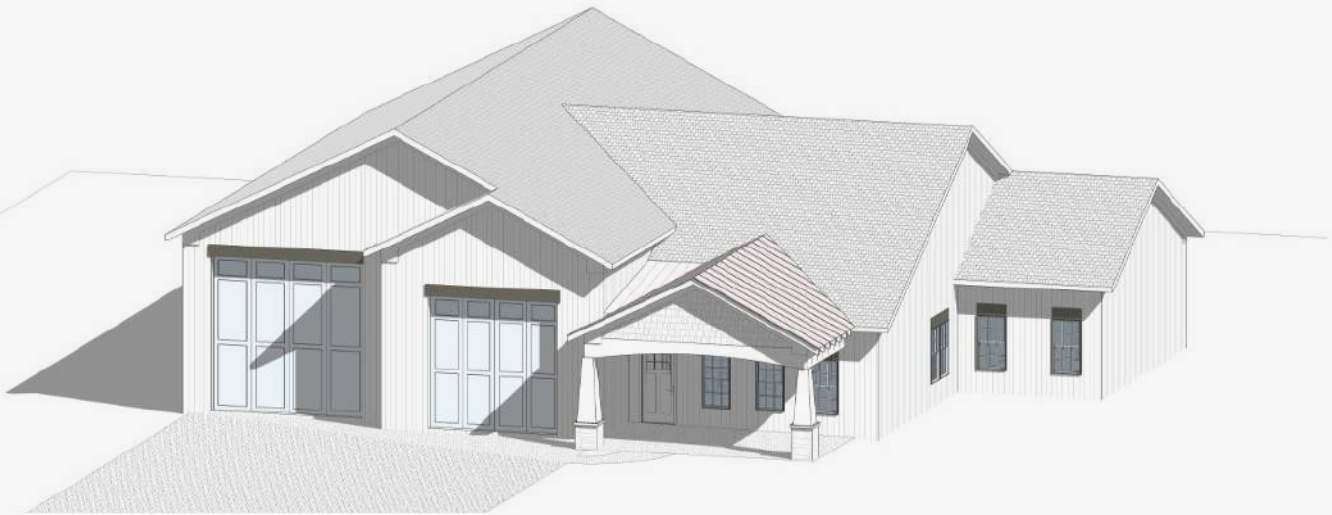
Lot #	Acres
1	0.70
2	0.69
3	1.11
4	1.39
5	0.91
6	0.69
7	0.69
8	0.69
9	0.98
10	1.18
11	0.69
12	0.69
13	0.74
14	0.79
15	1.08



HONEYCUTT FLATS

LUXURY BARNDOMINIUM LIVING

Customizable Building Examples



HONEYCUTT FLATS

LUXURY BARNDOMINIUM LIVING

Building & Floor Plan Example

