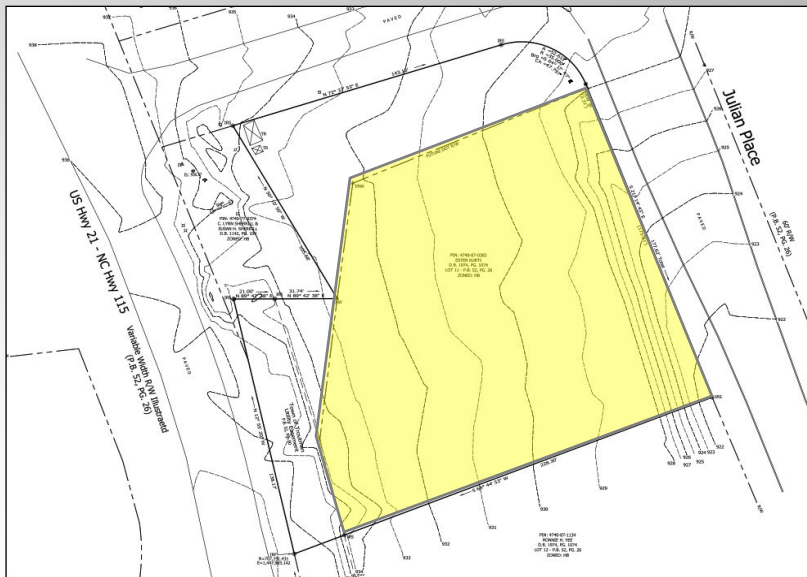


175 Julian Pl, Troutman NC

Commercial (HB) Corner Lot on Highway 21 Near I-77 Exit 42



Lewis Spivey

Broker (Property Owner)

704.363.1401 Cell

Lspivey@EquityCP.com

For Sale \$475,000

+/- 0.68 Acre Corner Lot

This Commercial property is located in The Charles Center Development at the corner of Highway 21 and Houston Rd. Current access to lighted intersection located at Julian Pl and Hwy 21/Exit 42 ramp. Planned signaled intersection aligning Flower House Loop and Houston Road at Highway 21. This area is seeing considerable growth in both residential and commercial sectors.



Equity Commercial Properties

114 Morlake Dr.
Suite 104
Mooresville, NC 28117

Office 704-799-9202
EquityCP.com

175 Julian Pl

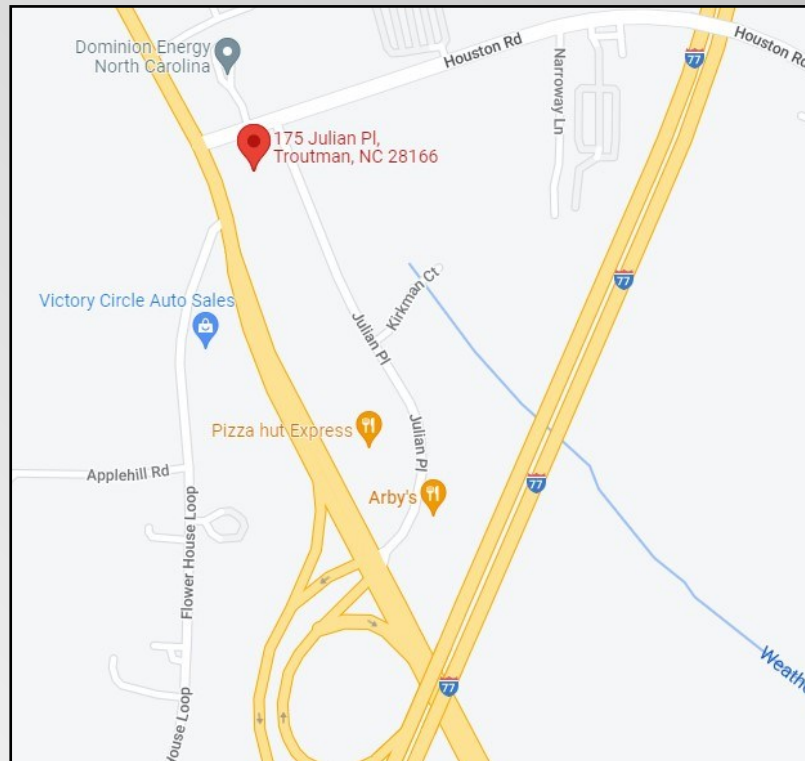
Troutman, NC

EquityCP.com



Property Details

Price:	\$ 475,000
Acreage:	+/- 0.68 Acres
Zoning:	HB
Proposed Use:	Retail/Office/Service
Nearby Interstate:	I-77 Exit 42
Water/Sewer:	City/Troutman
Watershed:	Outside of Watershed
Development:	The Charles Center



Equity Commercial Properties

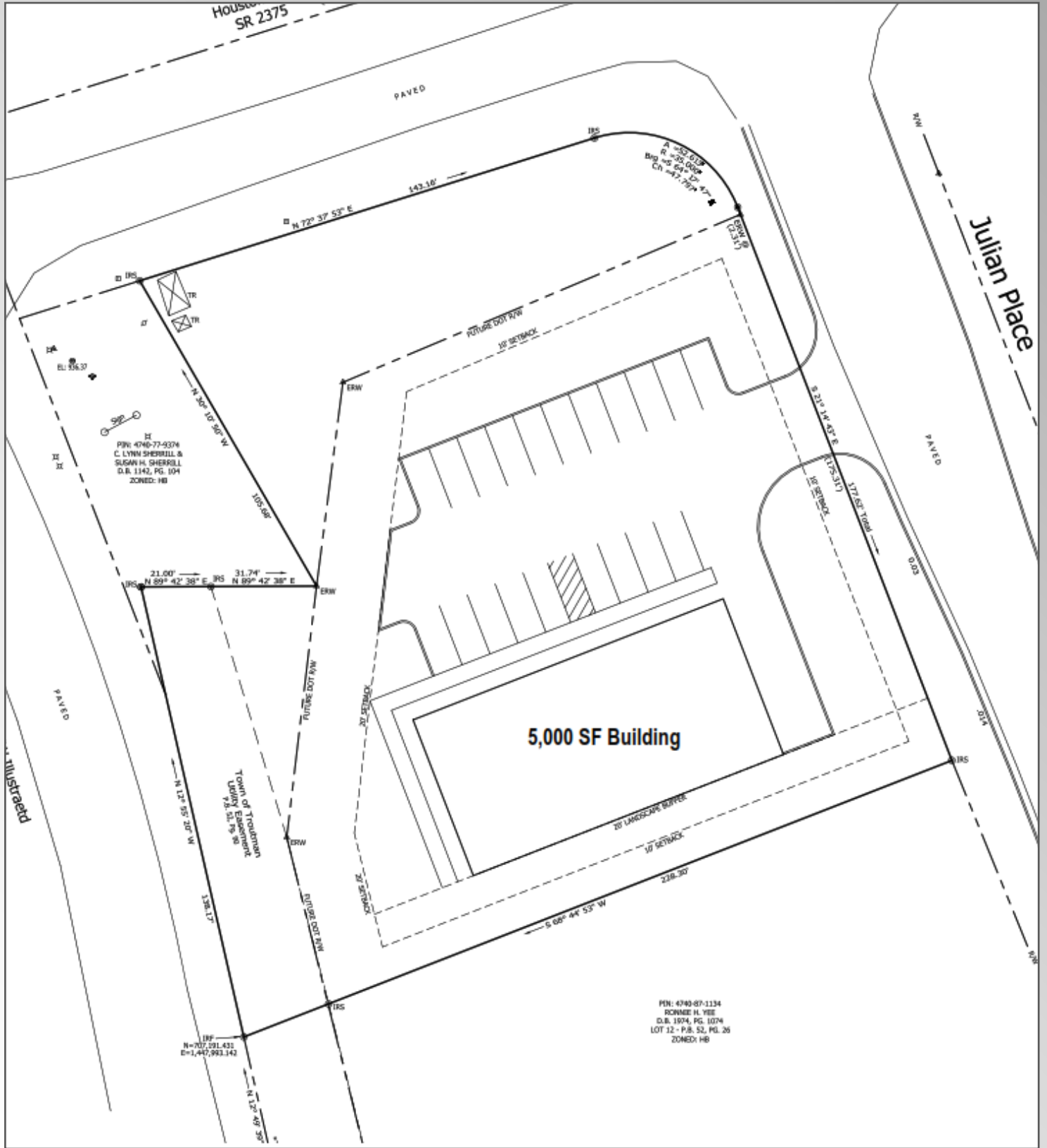
114 Morlake Dr.
Suite 104
Mooresville, NC 28117

Office 704-799-9202
EquityCP.com

175 Julian Pl

Troutman, NC

EquityCP.com



Equity Commercial Properties

114 Morlake Dr.
Suite 104
Mooresville, NC 28117

Office 704-799-9202
EquityCP.com